



HOLBROOKE
STUDIO RICHMOND

Up to 6,079 sq ft available

Presenting as the perfect space to grow your business, Holbrooke Studio has been designed with City workspace trends in mind so you can attract and retain talent with this brand new warehouse style refurbishment.

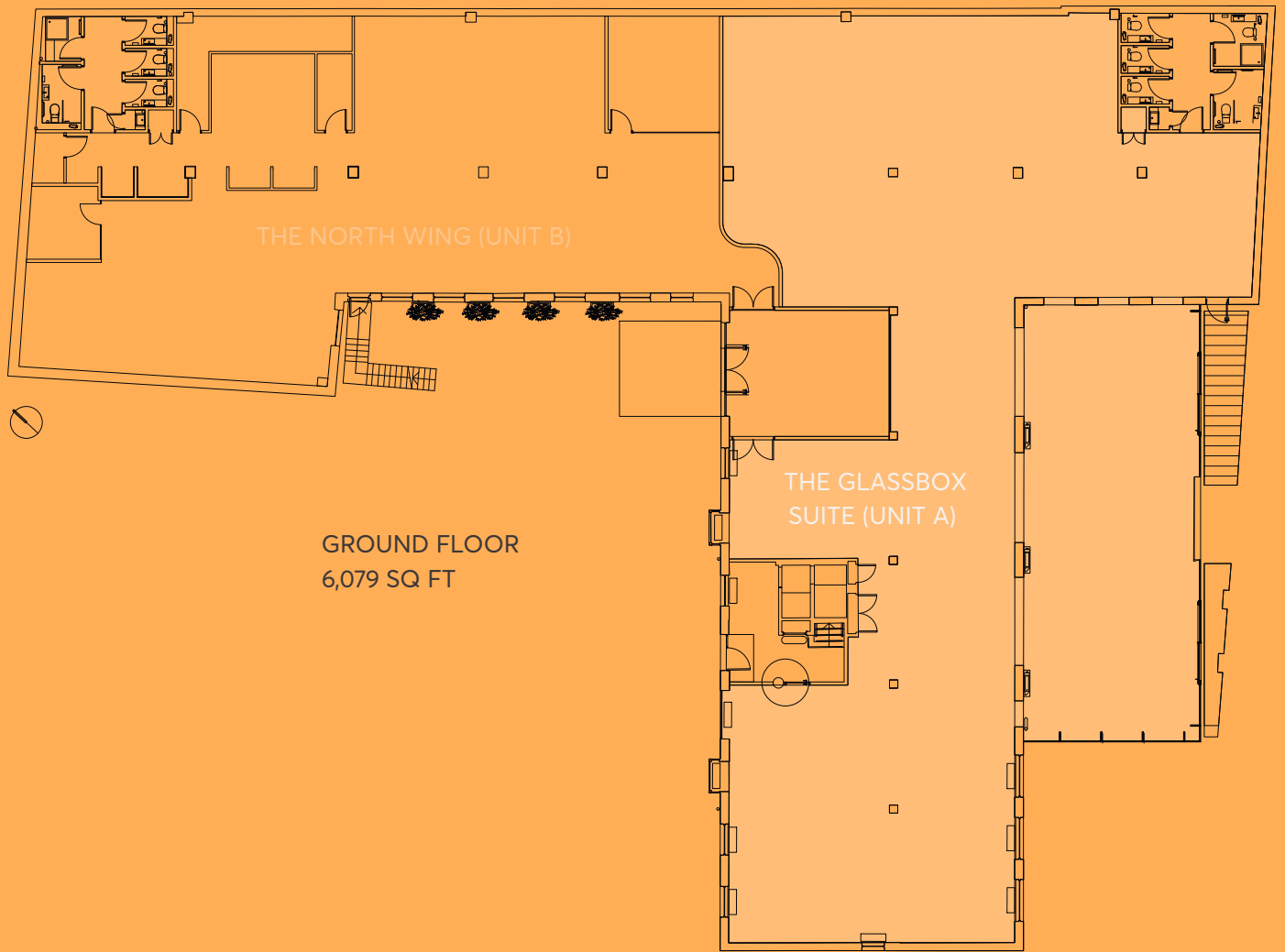
Holbrooke Studio is located in a secluded mews at the foot of Richmond Hill in the heart of Richmond town centre set amongst a wealth of curated cafes and bars.

You'll have everyday local amenities on the doorstep, exceptional commutability to central London, enviable green surroundings to encourage wellbeing and an superb riverside setting to impress clients.

This is a workspace to work for you.

Cutting edge
Restoration
City style
Destination
Workplace
Coffee, cafes
& croissants
Green spaces
Room to breathe
More connections
More options





SPECIFICATION

Holbrooke Studio is a three story self-contained office building which has undergone comprehensive refurbishment, to include:

- Brand new heating, cooling and air conditioning systems
- Exposed services with contemporary finishes
- Suspended LED light fittings with daylight dimming and presence control
- Brand new WCs
- 2 showers
- New openable windows
- Wide plank wood flooring
- Fibre telecoms connections enabled
- Bicycle racks
- 1 car parking space available on site
- Unique glass box space flooded with natural light
- Private outdoor space
- EPC B (39)



SOUTH ELEVATION

ACCOMMODATION

Last suite available in this highly specified warehouse style office. The subject suite benefits from an architect designed reception lobby and unique glass box space that forms focus of the wider suite.

It also benefits from a private outdoor area.

Floor / Unit	Sq ft	Availability
Ground (the Glass Box Suite)	6,079	Available now
Ground (the North Wing)		LET
1st		LET
2nd		LET
Total	6,079	

LOCATION

Richmond is an established location for businesses seeking to locate in an area with first-class retail and an array of dining options. The highly prized residential catchment provides a large pool of talent in search of an excellent work life balance.

Perfectly positioned and serviced by both London Overground and Underground networks, Richmond is the ideal location for today's leading businesses relying on full global connectivity with Heathrow Airport literally on the door step.

Outside of the office, Richmond boasts an abundance of open spaces and attractions; including Richmond Green, Richmond Park, Hampton Court Palace and Kew Gardens.



THE IVY

GAUCHO



SCOTT'S
MAYFAIR





TRAIN	MINS
Clapham JCT	9
Willesden JCT	17
Waterloo	19
Wimbledon	25
Stratford	60

UNDERGROUND	MINS
Hammersmith	16
Earls Court	23
Victoria	25
Bank	37
Embankment	34

AIRPORT	MINS
Heathrow	36
Gatwick	40

(source TFL)



Contacts



+44 (0)7802 789 702
kate.clark@eu.jll.com

(0)7709 507 257
gabrielle.Syson@jll.com



+44 (0)20 8940 2266
richard.farndale@martincampbell.co.uk

+44 (0)787 969 5525
david.keates@martincampbell.co.uk



+44 (0)20 3940 5575
alex@lewisco.co.uk

+44 (0)20 3940 5561
sam@lewisco.co.uk

Holbrooke Studio
Holbrooke Place, Richmond, Surrey, TW10 6UD
holbrookestudio.co.uk

JLL for themselves and for the vendors or lessors of this property whose agents they are, give notice that: The particulars are set out as a general outline only for guidance and do not constitute, nor constitute part of, an offer or contract; All descriptions, dimensions, references to condition and necessary permissions for use and occupation, and other details are believed to be correct, but any intending purchasers, tenants or third parties should not rely on them as statements or representations of fact but satisfy themselves that they are correct by inspection or otherwise; No person in the employment of JLL has any authority to make or give any representation or warranty whatever in relation to the property; Any images may be computer generated. Any photographs show only certain parts of the property as they appeared at the time they were taken.